



GL-TL Portable Table Lift

TWIN CYLINDER MOBILE MID-RISE LIFT INSTALLATION AND OWNERS MANUAL

GOLF-LIFT

2944 S.E. LOOP 820
FORT WORTH, TX 76140
PHONE: 817-560-9789
TOLL FREE: 800-788-9789
WWW.GOLF-LIFT.COM

Important Notices:

The floor on which the lift is to be operating must be 4 inch minimum thickness concrete, with reinforcement steel bars and minimum compressive strength of 3000 psi.

Failure by the purchaser to provide the recommended operating surface could result in unsatisfactory lift performance, property damage or personal injury.

TABLE OF CONTENTS

Daily Maintenance.....	3
Operating Tips.....	3
Tools Required for On Site Assembly.....	3
On Site Assembly Instructions.....	3
Work Platform Assembly Instructions.....	4
Lift Specifications.....	4
Lift Capacity Scale.....	5
Troubleshooting:	
1. Pump motor will not operate.....	5
2. Power unit switch does not operate properly.....	5
3. Lift mechanism does not move up and down smoothly.....	5
4. Lift does not lift its rated capacity.....	5
5. Cylinders leak under rated load.....	6
6. Lift will not lower.....	6
Parts List.....	7
Assembly Views:	
1. Lift Parts Assembly View.....	10

Daily Maintenance:

1. Make sure pins have appropriate snap ring or bolted tab in place.
2. Make sure all bolts are secured and snug with lock washer, nylon lock nuts or cotter keys.
3. Lift locking mechanism should lubricate to operate properly.
4. Check spring on locking mechanism for constant tension.
5. Check cylinders and hose for loose connections and leaks.
6. Check oil level in pump reservoir.

Operating Tips:

1. Lift should not lift more than its rated capacity.
2. Lift should be operated on level foundation.
3. There should not be any obstacles for the rollers to overcome during the lift.
4. The machine or vehicle that is being lifted should be balanced on the lift.
5. Do not remove heavy components from the machine or vehicle being lifted without adequate supports because it may become unbalanced and fall.

Tools Required for On Site Assembly:

1. 12" Crescent Wrench
2. 3/4" Open-End Wrench
3. 1/2" Open-End Wrench

On Site Assembly Instructions:

1. Mount motor and pump to power unit stand using the following:

- a. 4 – 5/16-18UNC HH cap screws x 1” Lg.
 - b. 4 – 5/16 Lock Washers
 - c. 4 – 5/16-18UNC HH Nuts
2. Mount the 3/8” hydraulic hose to 3/8” JIC adapter located on the lower end of the Hydraulic splitter. Fill reservoir tank with hydraulic oil (SAE 10 weight non-foaming non-detergent) and plug into 110 volt power source.
 3. The lock release cable should already be installed at the lock end of the lift. Attach the other end of the lock release cable to the brake handle and mount to the power unit stand handle.

Work Platform Assembly Instructions:

1. Raise scissor lift to its maximum height and remove the 4 swing arms if they are mounted to the slots on the lift. Load work platform with approach ramp hinge pipe on the opposite end of the cylinders and safety latch. Center platform from side to side and attach using the spacer bolts P/N: PMR-6550 and ½” USS flat washers P/N: PMR-6158 to secure the work platform to the scissor lift. Before tightening, slide the table as far back to the approach ramp end as possible and tighten mounting bolts, DO NOT OVER TIGHTEN BOLTS.
2. Install the 4 set screws into the 4 corners of the recessed surface plate cutout and set the machined Surface Plate into the table top using the T handles provided. The set screws will allow you to level the surface plate if desired.
3. Next, bolt the push rod assembly underneath the work platform with the ¼-20UNC bolt, ¼” flat washer, ¼” lock washer and ¼-20UNC nut as shown in. Slide push rod assembly to the very back of the slotted holes.
4. Next is to pin the ramp to the work platform using the ramp pins P/N: PMR-6608. Attach pins from inside and slide toward outside.
5. Lower lift slowly to make sure the push rod is working properly. If ramp is not sliding smooth as the lift goes down, raise the lift, loosen the spacer bolt and slide the work platform at ½” increments as required.
6. Place side and front rails on work platform as shown in Fig. #1.

Lift Specifications:

Lowered Height	3 7/8”	Current	110V
Raised Height	48”	Motor Output	1 HP

Overall Width	39 ½”	Pump Output	3200 psi
Overall Length	88”	Fluid Capacity	6 qt.
Ship Weight	1,326 lbs		

Lift Capacity Scale:

This is what the lift will pick up with weight directly on the platform at the specified distances from the floor.

1,500 lbs.	Scissor lift platform is all the way down (with no spacer on the platform attachment bolts).
3,000 lbs.	Scissor lift platform is raised 1 ½: distance from the floor. (with provided spacer on platform attachment bolts)
4,000 lbs.	Scissor lift platform is raised 2 ½” distance from the floor. (requires additional spacer)
5,000 lbs. floor.	Scissor lift platform is raised 3 3/8” distance from the floor. (requires additional spacer)
6,000 lbs. floor.	Scissor lift platform is raised 4 3/8” distance from the floor. (requires additional spacer)

Troubleshooting:

1. Pump motor will not operate.
 - Check electrical plug and cord.
 - Check electrical supply breaker.
2. Power unit switch does not operate properly.
 - Contact the manufacturer for a replacement or additional troubleshooting information.
3. Lift mechanism does not move up and down smoothly.
 - Move vehicle location on the lift for more equal weight distribution.
 - Bleed the hydraulic system, first loosen the hose connection at the rod end of both cylinders. Then loosen the hose from fitting (NOT the fitting from the cylinder). Run the power unit until fluid appears at the hose and fitting connection and

hose connection at the rod end. When there is no more air, tighten both hose connections.

4. Lift does not lift its rated capacity.

- Move vehicle location on the lift for more equal weight distribution.
- Check the voltage of the electrical supply with the unit run under load. Make sure the pump is getting adequate voltage.

5. Cylinders leak under rated load.

- Check for leaks at the hydraulic hose, fittings, cylinders and pump.
- Contamination may be in the check valve preventing valve from completely closing.
 1. Hold open the lowering valve by pushing the control lever on the power unit.
 2. At the same time, run the pump for 30 seconds to flush the valve.
 3. Repeat 3 to 4 times.
 4. If cylinders continue to leak down, pump may have a faulty valve. Contact the manufacturer.

6. Lift will not lower.

- Raise lift 1" to 2", squeeze release handle and try again to lower lift.
- Check tension on the release cable.

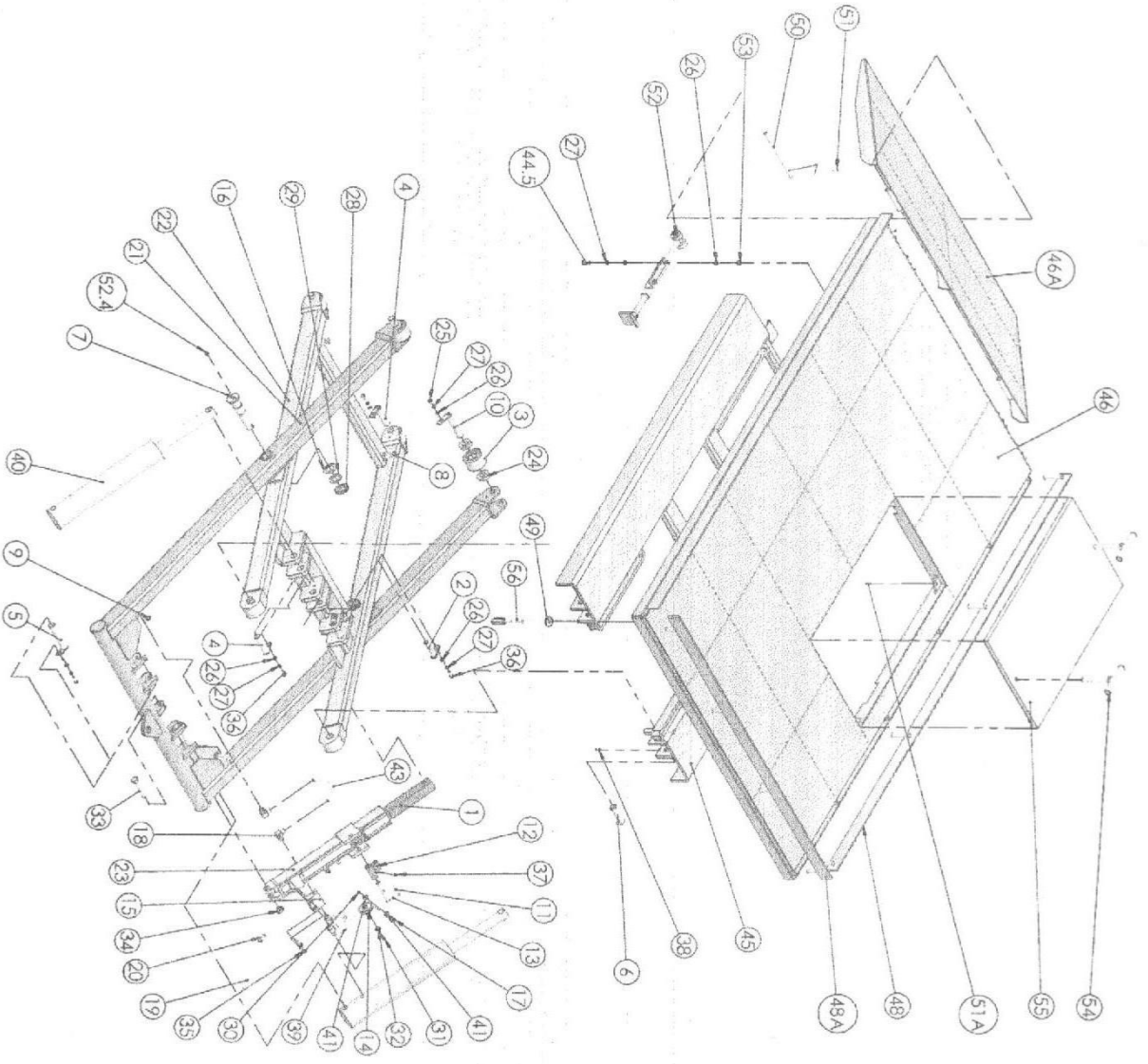


FIG. # 1

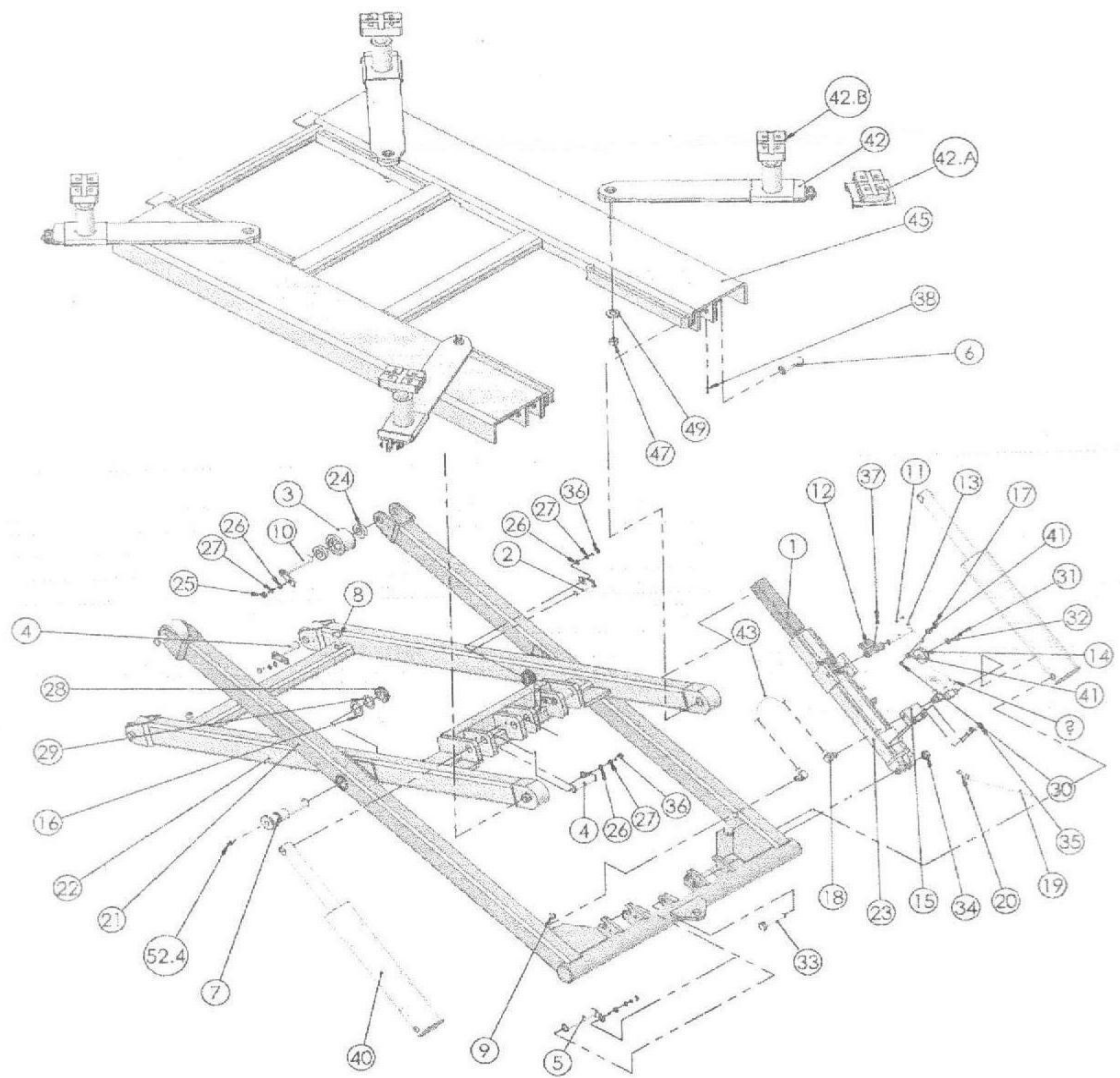


FIG. # 2

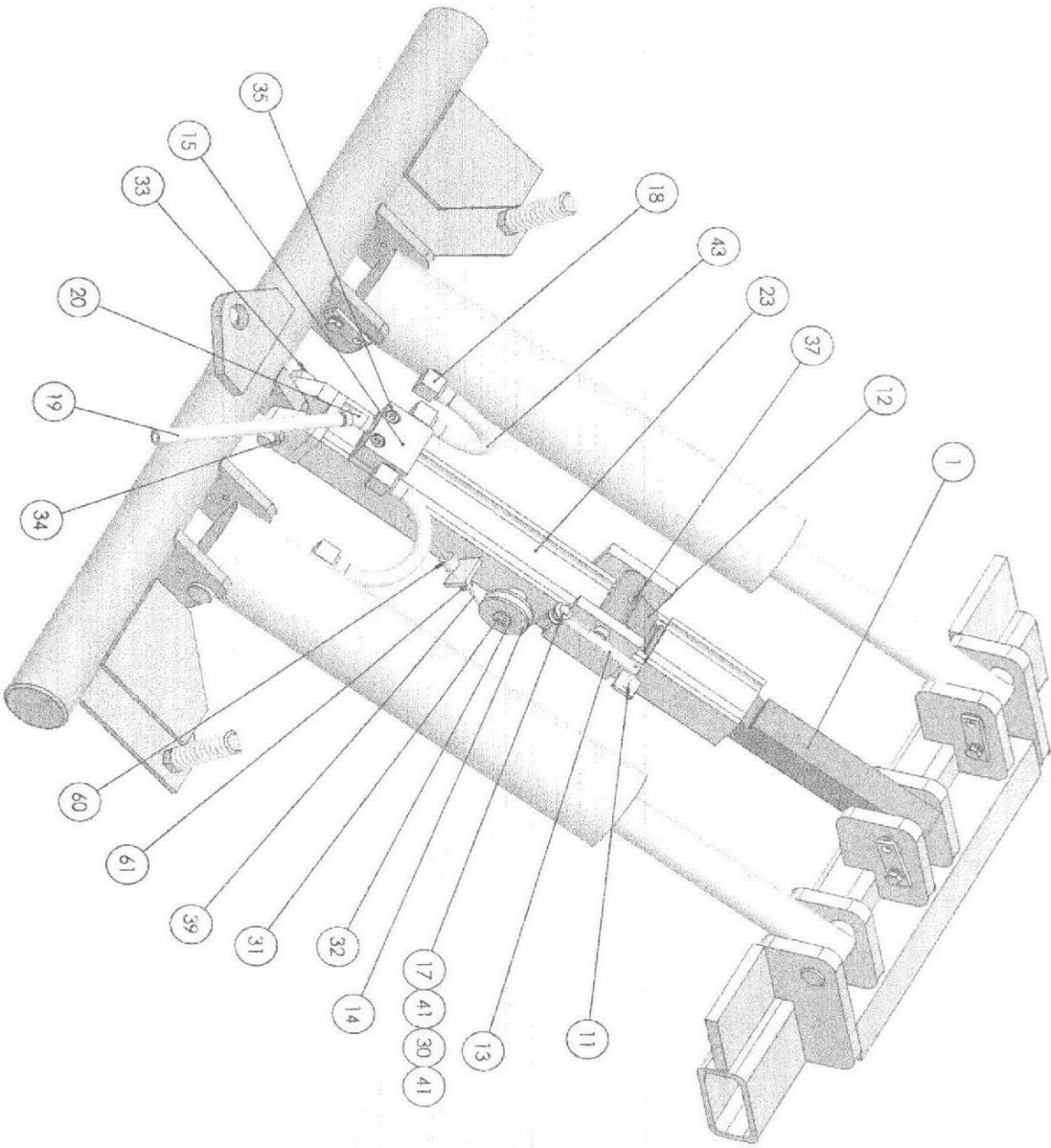


FIG. # 3

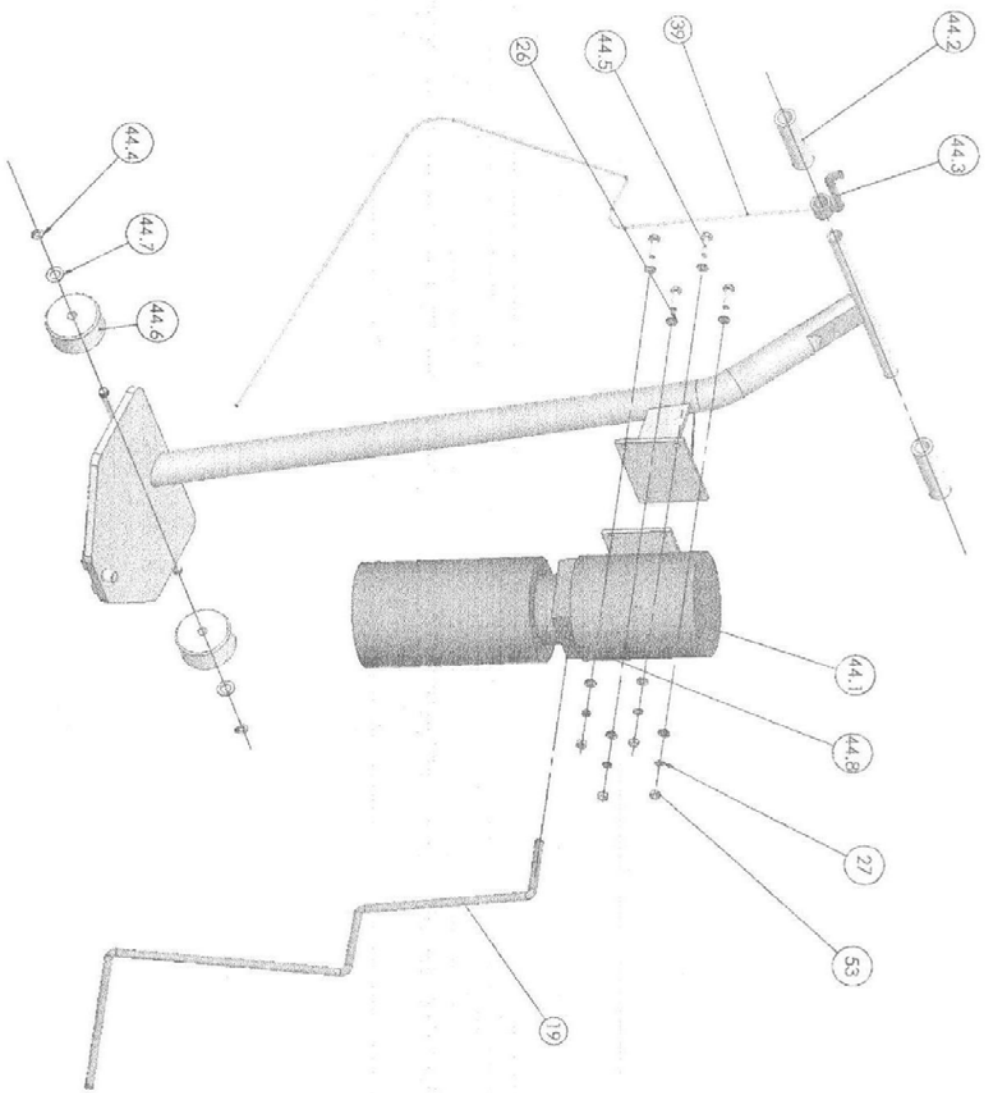


FIG. # 4

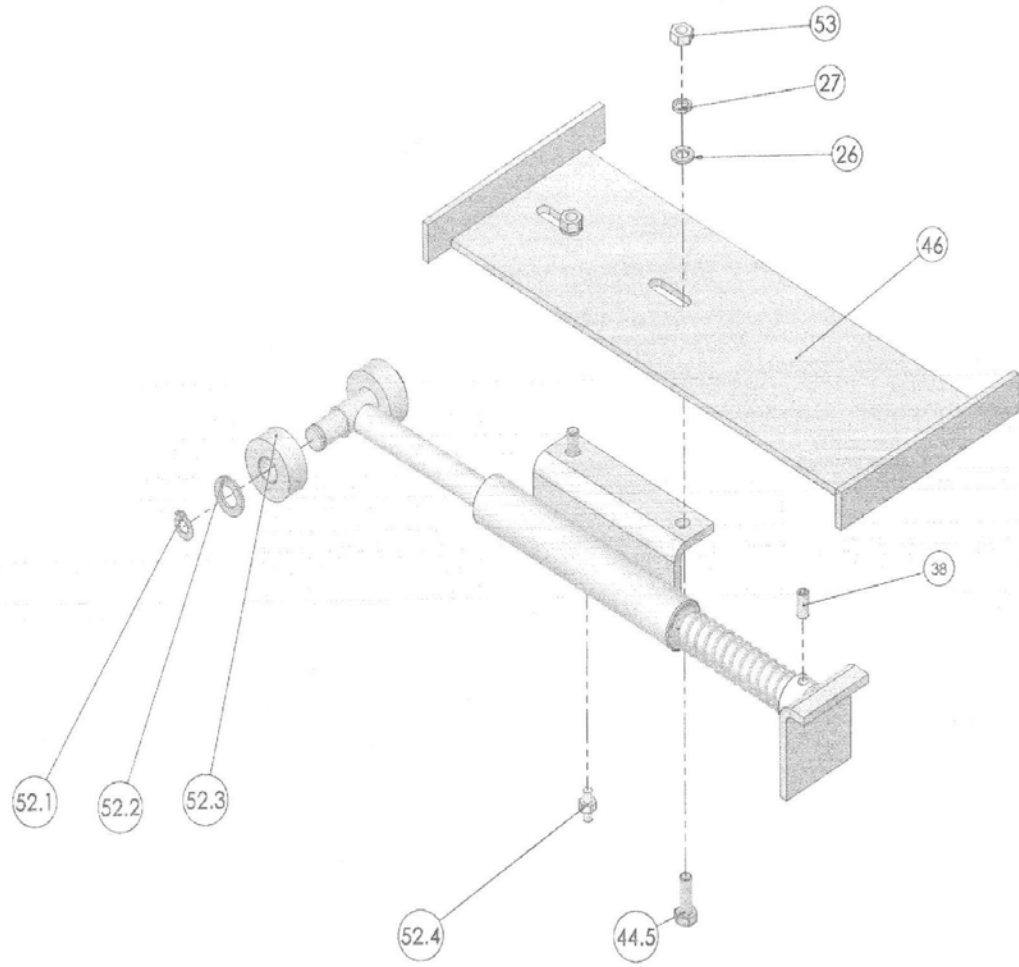


FIG. # 5

PARTS LIST FOR GL-TL

ITEM	PART NUMBER	DESCRIPTION	QTY
1	PMR-6001	SAFETY GEAR RACK	1
2	PMR-6002	PIN	1
3	PMR-6003	ROLLER	4
4	PMR-6004	PIN, FLOOR ROLLER	4
5	PMR-6005	CYLINDER BOTTOM PIN	2
6	PMR-6006	PIN	2
7	PMR-6007	SCISSOR PIN	2
8	PMR-6008	SPRING	2
9	PMR-6009	SPRING	2
10	PMR-6010	PIN, TOP ROLLER	2
11	PMR-6011	SPRING, LATCH RESET	1
12	PMR-6012	SAFETY LATCH	1
13	PMR-6013	T SHAFT, LATCH	1
14	PMR-6015	CABLE PULLEY	1
15	PMR-6016	TEE FITTING, HYDRAULIC	1
16	PMR-6017	WASHER	2
17	PMR-6018	SCREW	1
18	PMR-6019	ELBOW FITTING	4
19	PMR-6020	HYDRAULIC HOSE	1
20	30400-9054(B)	45° FITTING	1
21	PMR-6200	SCISSOR FRAME, OUT SIDE	1
22	PMR-6300	SCISSOR FRAME, INSIDE	1
23	PMR-6400	CHANNEL, SAFETY	1
24	GB/T126-94	BEARING 6005	8
25	GB5781-86	BOLT M8 X 16MM	4
26	GB95-85	FLAT WASHER	19
27	GB93-87	LOCK WASHER	15
28	GB810-88	NUT 30MM X 1.5	2
29	GB858-88	LOCK WASHER 30MM	2
30	GB923-88	NUT 6MM	1
31	GB67-85	SLOTTED NUT 6MM X 10	1
32	GB96-85	WASHER	1
33	GB5782-86	BOLT 16MM X 80MM, GRADE 8.8	1
34	GB/T889-86	NYLON LOCK NUT 16MM	1
35	GB70-85	BOLT 8MM X 16MM	2
36	GB5781-86	BOLT 8MM X 20MM	5
37	GB70-85	BOLT 5MM X 16MM	1

38	GB77-85	BOLT 8MM X 16MM	5
39	PMR-6030	SAFETY RELEASE CABLE	1
40	YG03-9100	CYLINDER	2
41	GB95-85	FLAT WASHER	2
42	PMR-6150	SWING ARMS	4
42A	PMR-6130	LIFTING PADS, SADDLE	4
42B	PMR-6140	LIFTING PADS, SCRWE	4
43	PMR-6021	HYDRAULIC HOSE	2
44	51053-1800	DOLLY	1
44.1		HYDRAULIC POWER UNIT	1
44.2	51053-1811	HANDLE	2
44.3	PMR-6030	SAFETY RELEASE HANDLE	1
44.4	GB91-86	SPLIT PIN 3MM X 30MM	2
44.5	GB5781-86	BOLT 8MM X 25MM	6
44.6		CASTERS	2
44.7	GB97.1-85	FLAT WASHER 12MM, GRADE C	6
44.8	30400-9053YZ	FITTING	1
45	PMR-6100	TOP PLATFORM	1
46	PMR-6500	TABLE TOP	1
46A	PMR-6600	RAMP	1
47	GB/T889-86	NYLON LOCK NUT 18MM	4
48	PMR-6540	SIDE RAIL	2
48A	PMR-6530	FRONT RAIL	1
49	PMR-6158	WASHER	8
50	PMR-6608	SHAFT	2
51	GB78-85	SCREW 6MM X 8MM	2
51A	GB78-85	SCREW 8MM X 16MM	4
52	PMR-6700	RAMP KICK-UP	1
52.1	GB894.2-86	SLEEVE	2
52.2	GB95-85	FLAT WASHER	2
52.3	PMR-6701	NYLON SLEEVE	2
52.4	GB1152-89	OIL ZERK	3
53	GB41-86	NUT	6
54	PMR-6533	HANDLE	2
55	PMR-6580	FLAT INSERT	1
56	PMR-6550	BOLT	4
60	PMR-6030B	CABLE ADJUST BOLT	1
61	PMR-6030C	NUT	1